





You have already seen more than enough  
to register this music’s perniciousness

You have already been exposed to too much  
too much colonizer entitlement  
too much colonizer expectation

before the Common Man

the colonizer-settler musician conjures the Colonizing Man

the musician channels the Colonizing Man

the musician claims land with music

the musician (re)writes sovereign Indigenous land as Space

the musician (re)writes sovereign Indigenous peoples as ghosts

before the Common Man can be heard

the musician points European art music at Turtle Island

the musician asserts colonizer sovereignty through a fanfare

the musician asserts colonizer sovereignty through volume

through the Common Man

the musician disguises the Colonizing Man

the musician (re)writes the Colonizing Man as innocent

the musician normalizes the Colonizing Man

the musician (re)writes the Colonizing Man as virtuous

the musician monumentalizes the Colonizing Man

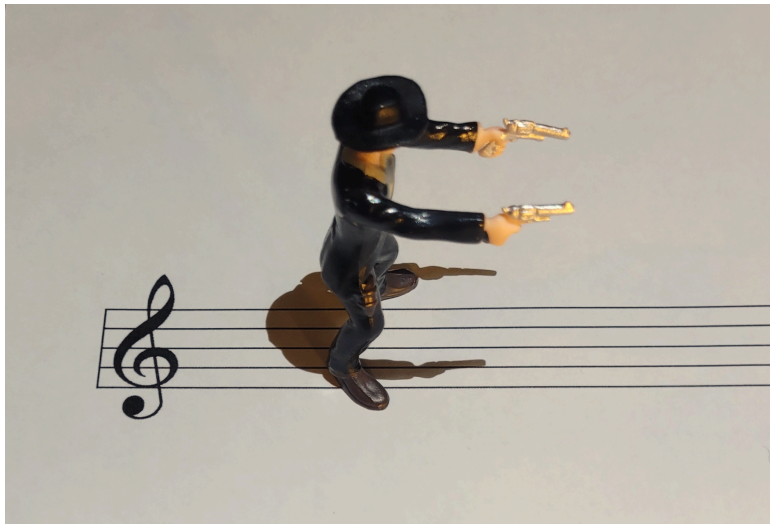
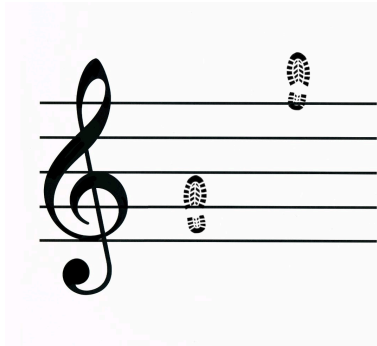
the musician disguises dis/possession as music

before the Common Man can stand on earth

the writing of Turtle Island as Indian Country

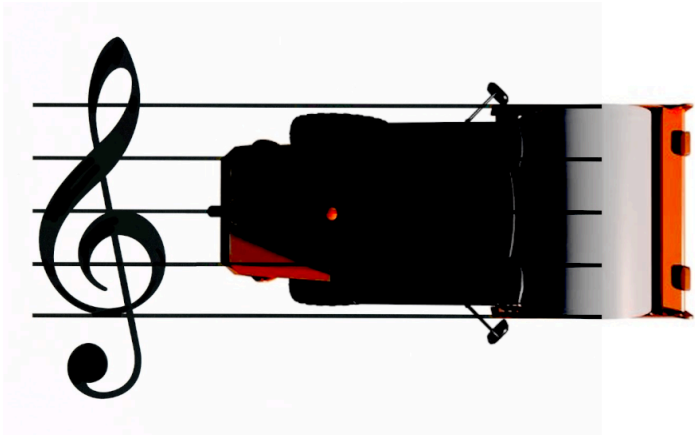
the writing of the South as Indian Country

the writing of sovereign nations as ungrievable



before the Common Man can navigate Turtle Island

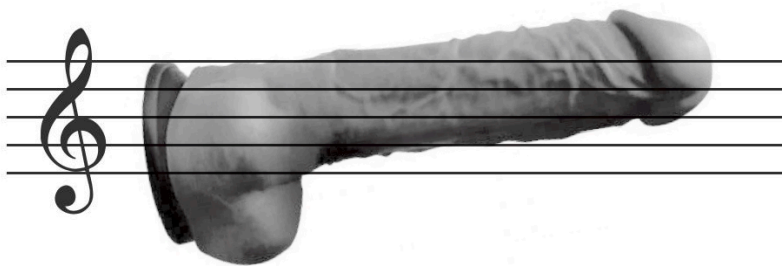
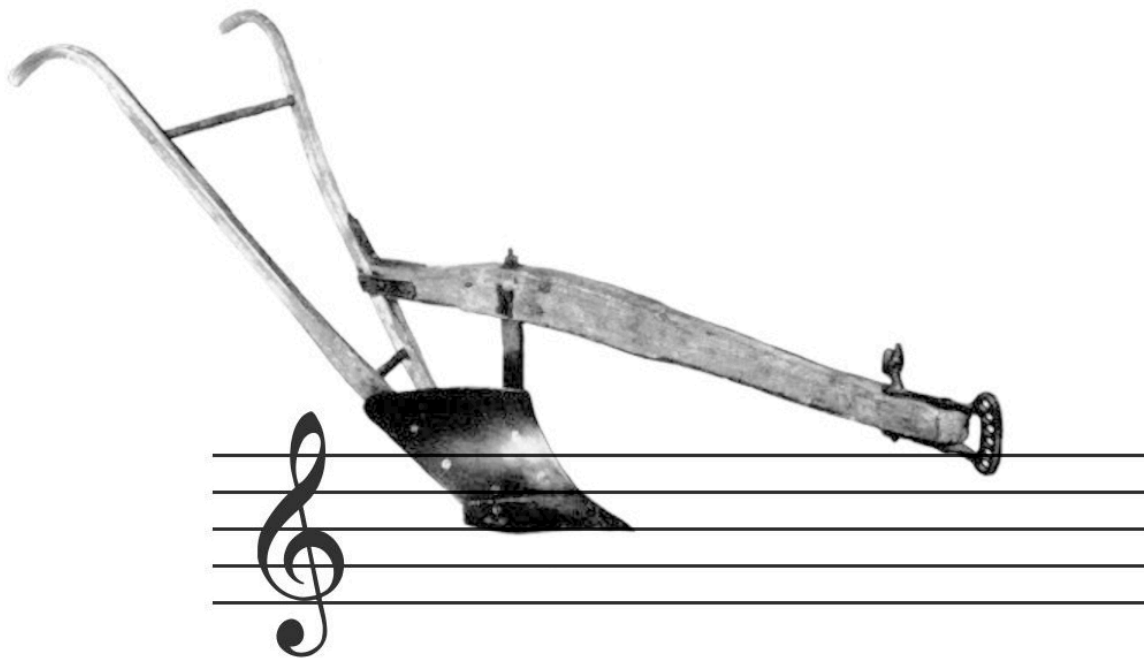
the writing of Turtle Island as space



before the Common Man set foot on Turtle Island

the writing of Turtle Island as (Wide) Open

the writing of Indigenous Nations as unsovereign



the normalizing of the Colonizing Man as Common



the collapsing of the Common Man into the Colonizing Man

through the Common Man

the monumentalizing of the colonizer-settler Composer

the monumentalizing of the colonizer-settler Work

the monumentalizing of Western musical notation

the monumentalizing of occupation

the setting in stone of occupation



the monumentalizing of terraforming

the monumentalizing of chiselling directly on Turtle Island

the monumentalizing of chiselling into the turtle's flesh